

WESCO delivers

HOT PRODUCTS



January 2006

Now Stocked at
WESCO!

Heat Trace Cable & Accessories

3M - TTS Self Regulating
Heating Cable for Pipe Freeze
Protection

Basis for a Good Design

1. Establish Design Parameters

- pipe sizes / diameters
- pipe material & lengths
- type & # of valves, pumps, supports
- minimum ambient temperature
- heating cable start-up temperature
- insulation material & thickness
- supply voltage 120V or 208-240Vac

2. Select Proper TTS Heating Cable

- per TTS Design Chart

3. Determine Circuit Lengths

- length of piping, # of valves, pumps, pipe supports
- available circuit breaker sizes

4. Choose Installation Accessories

- cable
- power connection
- thermostats
- T Splice kits
- End termination kit
- attachment tape
- inline splice kits
- aluminum tape



3M

Self Regulating Heat Trace Cables

For Industrial, Commercial & Residential Buildings



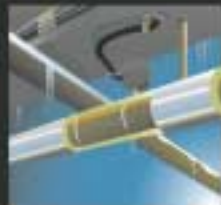
Reduce Heating Costs

Quick & Easy Installation

Long-term Performance & Reliability

Lower Installation & Maintenance Costs

TTS™
Pipe Freeze
Protection Cable



TTS™
Roof & Gutter Snow
& Ice Melting Cable



KSR™
Surface Snow & Ice
Melting Cable



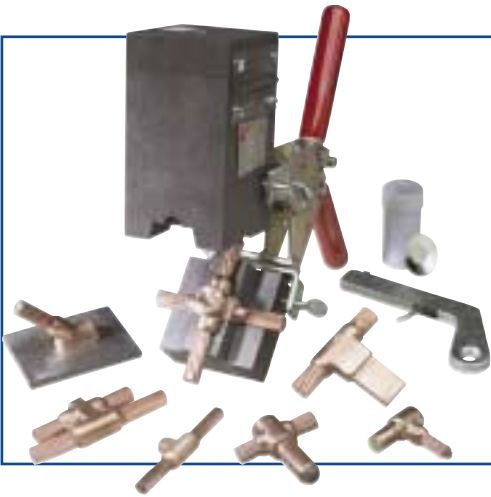
HSX™
Hot Water Temperature
Maintenance Cable



Leading Through
3M Innovation

The BURNDYWeld™ Connection

- simple, efficient method of welding copper to copper or copper to steel.
- site friendly - light, portable and requires no outside power source
- fifty or more welds per mold capability if used with proper care
- minimal time and skill required to obtain a maintenance-free molecular weld connection
- # 90, # 115 & # 150 "Weld Metal" cartridges available from WESCO stock

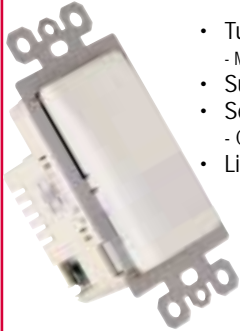


Pass & Seymour



CWP100 Residential Vacancy Sensor

- Turns lights OFF when room becomes "vacant"
 - Manual-ON, Auto-OFF
- Suitable for incandescent, fluorescent, low voltage loads
- Selectable time delay feature
 - Choose from 6 different times
- Light Almond, Ivory, White



WSP200 Automatic Wall Switches

- Passive Infrared Technology
- Load requirements:
 - 0 to 800W @ 120VAC, ballast & tungsten
- Time delay from 30 seconds to 30 minutes
- Light level adjustment from 10 to 150 footcandles



Gift reward when you buy a combination of CWP100 & WSP200 devices

on·Q

Now available through WESCO - Legrand Home Systems - Entertainment, Communications & Home Comfort

Maximize energy savings
& performance.



Philips PL Lamps and Advance SmartMate™ ballasts.
Perfect mates for a superior and simple lighting solution.

- User-friendly! Quicker, easier installation
- Energy efficient without sacrificing light quality
- Higher performance with longer lamp life

www.advancetransformer.com

www.philips.com



INVUE™
LIGHTING SYSTEMS



Meticulous Detailing
Compelling Solutions
Reduction in Total Energy Usage



Exclusive TightSight™ Display Helps Put New Line of Clamp Meters in a Class by Itself

They're new, they're packed with features, and they're like nothing you've ever seen before. The innovative new TightSight™ display gives you a level of testing freedom and safety beyond any test tool on the market.



- Used in tight, dark or bright locations
- Safety features include voltage warning on all functions
- Cat IV rating
- Available in 400, 600 & 1000 Amp models
- All double as full-function multimeters

Buy a TightSight Clamp Meter and receive a **free** Ideal T&M T-Shirt or Ideal Cap!



"Don't Crimp Your Style - Crimp These!"



PAN-LUG™ Power & Grounding Connectors
Grounding Connectors

Complete Product Offering for Power and Grounding Applications

Including:

- compression lugs
- crimping tools
- mechanical lugs
- grounding connectors



EATON

Electrical

Intelligent Technologies IT. Soft Starters S811 / S752 The Perfect Partnership for High Horsepower Applications

S811 Communicating Soft Starter

- kick start feature enables soft starting of high friction loads
- networked communications capability for process data management and preventative diagnostics
- 11 amps to 1000 amps



- compact, multi-functional solid-state reduced voltage
- 24V DC control module enhances personnel and equipment safety
- small footprint, 55-91% smaller, perfect for MCC retrofits
- internal run bypass contactors & overload protection eliminate need for additional devices

S752 Soft Starter

- configurations for applications in the line of the motor (.25 to 50 amps), or in the delta windings of the motor (.44 to 78 amps)
- panel mounted, in MCC's or in Enclosed Control



- run bypass mode reduces heat generated by the starter
- enclosures can be 22-78% smaller
- controlled acceleration & deceleration of 3 phase motors up to 690V
- **great application for Aggregate duty, Pumping / Wastewater, and HVAC**



THE WORLD'S MOST ADVANCED SOFT STARTERS



**Breakaway with
WESCO!**
And **SCORE** great gifts with
HP Counter Promotions



Coming 1st Quarter 2006

WESCO Distribution
475 Hood Road
Markham, ON L3R 0S8
Postage Guaranteed

RAYOVAC



- Long range beam that outperforms typical LED lights
- Light Emitting Diode (LED), unlike a bulb, never needs replacing

- Longer battery life (than typical incandescent bulb)
- Impact resistant

Receive a small gift with every purchase of the new Industrial Multi-LED Flashlights!

19 Fully Stocked Competitive Priced Locations in Western Canada!

Abbotsford, BC
Tel: 604-856-7873
Fax: 604-859-5396

Kamloops, BC
Tel: 250-374-2112
Fax: 250-372-8044

Fort St. John, BC 
Tel: 250-261-6738
Fax: 250-262-6702

Fort McMurray, AB
Tel: 780-799-4337
Fax: 780-799-4475

Burnaby, BC
Tel: 604-299-5566
Fax: 604-299-5547

Kelowna, BC
Tel: 250-862-8200
Fax: 250-860-0060

Calgary, AB
Tel: 403-253-7561
Fax: 403-258-0210

Regina, SK
Tel: 306-525-5841
Fax: 306-347-0706

Richmond, BC
Tel: 604-270-7873
Fax: 604-273-3299

Prince George, BC
Tel: 250-562-3306
Fax: 250-562-4832

Red Deer, AB
Tel: 403-343-2113
Fax: 403-340-8210

Saskatoon, SK
Tel: 306-242-1296
Fax: 306-934-6561

Surrey, BC
Tel: 604-599-1100
Fax: 604-599-1119

Nanaimo, BC
Tel: 250-758-1777
Fax: 250-758-2429

Edmonton, AB
Tel: 780-452-7920
Fax: 780-451-2195

Winnipeg, MB
Tel: 204-633-3000
Fax: 204-633-9157

Castlegar, BC
Tel: 250-365-0545
Fax: 250-365-0969

Victoria, BC
Tel: 250-382-7265
Fax: 250-382-5334

Grande Prairie, AB
Tel: 780-539-2110
Fax: 780-539-2120

WESCO International is a Fortune 500 holding company whose primary operating entity is WESCO Distribution, a leading distributor of MRO (maintenance, repair, and operating) products and procurement outsourcing services. WESCO operates over 350 full service branches throughout North America and around the World. Major markets served include industrial, construction, government and data communications.



For more information call 1-866-WESCOCA (937-2622) or visit our web site at www.wesco.ca

Please note that there are limited quantities of Flyer sales items. Prices are subject to change based on availability.

WESCO